

JETTA



Das Auto.



**If what you drive says something about you,
the Jetta speaks volumes.**

Striking in design, resolute in terms of comfort and safety, and ambitiously powered when it comes to performance, the Jetta is all about character. A character that is as level-headed as it can be indulgent. It's assertive, consistent, distinctive and energetic with a hint of impulsiveness when it comes to being on the open road. All of which makes it a truly intelligent choice of motor vehicle, and naturally says a lot about the person driving it.

It says a lot about you. **Jetta.**



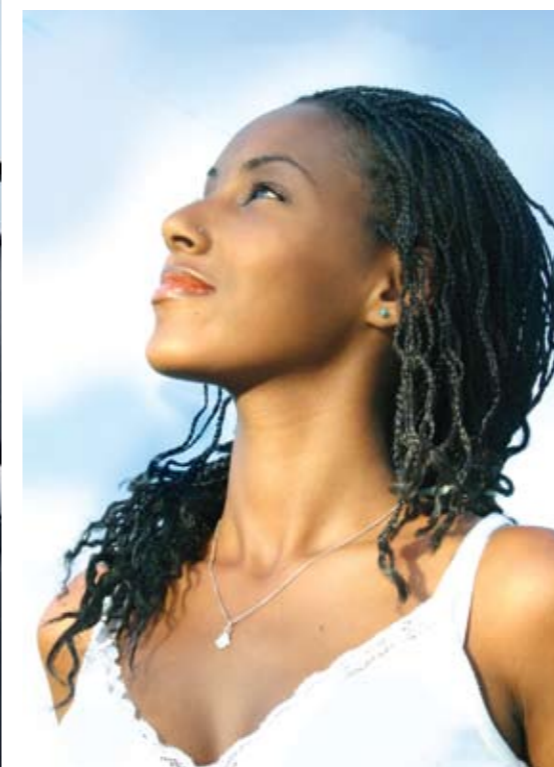
True style - it's something you're born with.

The Jetta's beauty is more than skin deep. There's no denying that. Smooth lines, sleek design and an artful attention to detail are more than pleasing on the eye. Look more closely and you'll notice that the larger panels have been joined by advanced laser-welding techniques to create its effortless elegance and because no seam on the exterior is wider than 1 mm, it also has an increased overall torsional rigidity and improved driving characteristics.

The chrome front grille is bold in design adding a sportiness and grace to the Jetta. Even the window wipers are hidden from view providing an aerodynamic edge. Step around the back for a rear view and you'll be struck by the uniquely designed tail lights. Taking their shape from the Golden Ratio, a measure of divine proportion found in nature, they are perfectly circular and concentric and, with the inclusion of LED (Light Emitting Diode) lights, they create a striking appeal - all of which ensures that whichever way you look at it, the Jetta is a masterful stroke of design genius.



In addition to its head-turning looks, the Jetta also commands a powerful presence with its size. With a length of 4 554 mm, a width of 1 781 mm and a height of 1 459 mm, the Jetta is not only generously proportioned on the outside – the spacious interior offers plenty of legroom and the luggage area boasts an impressive 527 litres. All of which goes to show that the Jetta has been built with both beauty and comfort in mind.



Step into your comfort zone.

Modern and meticulous, every inch of the Jetta's interior reflects an appreciation for high-quality materials, as well as uncompromising attention to detail. Leather seating and trim, which comes standard on the 2.0 TSI and optional over the rest of the range, offers extra comfort and support. Subtle and elegant, metallic chrome traces heighten the luxurious feel of the Jetta's interior. Ergonomically designed buttons and controls are interspersed throughout the cabin setting a superior benchmark in the Jetta. The various engines available in the Jetta range are complemented by Trendline, Comfortline and Highline finishings.



manifold injection, enabling better performance and higher torque whilst reducing fuel consumption and emissions.

DSG® technology (Direct Shift Gearbox), available on the 1.6 TDI, 1.4 TSI and 2.0 TSI, uses two independent gearboxes which are linked to produce a swifter and more seamless transmission through every gear, and as a result delivers dynamic acceleration.

Servotronic® power steering makes for easier and safer driving. Sensors permanently monitor speed and driving conditions - reacting precisely to any steering manoeuvres made by the driver. The Servotronic® power steering system varies its assistance according to speed, which enables it to offer more driver control and driver feedback when you need it most.

The Jetta sets a benchmark with a fully independent suspension system, featuring a truly innovative multi-link rear axle. This improves agility and stability which in turn creates harmonious and controlled body movements on all kinds of road surfaces. This improved dynamic interplay between the front and rear axle allows for better contact between the wheels and the road, resulting in better handling, more driving comfort and driver control.

Performance as intuitive as you are.

The Jetta comes equipped with more drive than ever before. The diesel-powered derivatives give a new power dimension to diesel engines, with the 1.6 TDI and 2.0 TDI producing 77kW and 103kW respectively. The petrol-powered 1.6, 1.4 TSI and 2.0 TSI deliver performances that will leave you breathless - especially the 2.0 TSI, which has an astounding 147kW at its disposal.

Both TDI and TSI engines offer greater fuel efficiency, with TSI (Turbo Stratified Injection) technology supplying each cylinder in the Jetta with a direct injection of fuel. This allows for a higher compression ratio, as opposed to an indirect



Safety first, last, and with six airbags in between.

The Jetta carries the weight of responsibility with ease, keeping you and your passengers safe with advanced crumplezone technology in the front and rear, and six carefully placed airbags. Standard across the range are front driver and passenger, as well as side and curtain airbags that extend to the rear passenger area. The side airbags have been designed so that they are precisely integrated into the side structure of the Jetta, providing exemplary thorax, abdomen and pelvis protection. A new sensor concept also allows for even faster deployment in the event of side collisions.

Built with the firm philosophy that prevention is better than reaction, the Jetta ensures that once you are on the road, you remain there. The optional ESP (Electronic Stability Programme) recognises the first signs of a critical situation and intervenes within milliseconds by utilising both braking and engine management control systems to stabilise the Jetta. This, in conjunction with ABS (Anti-lock Brake System) and optional EDL (Electronic Differential Lock), make for one of the safest and most secure driving experiences.



Adaptive headlights have been developed to measure ambient light. A simple click of a dial ensures they switch on automatically on entering a tunnel, or as evening approaches. A second click and the headlights stay on, with front fog lights also activated for a clearer, safer drive. The Jetta also features optional self-cleaning Xenon headlights, just another intelligent function to ensure added safety when travelling in the dark.



The rear lights feature Volkswagen's state-of-the-art LED (Light Emitting Diode) technology. Not only are LED lights more intense, which means that they can be seen from a greater distance and are noticed more quickly by other drivers, but they also have a higher switching speed. This means that LED lights respond almost immediately once current is flowing. In high speed situations, this offers a vital safety margin when the brakes are applied swiftly.



This information was effective as at March 2010 and is subject to change without notice.

Visit us at vw.co.za

©Volkswagen of South Africa